

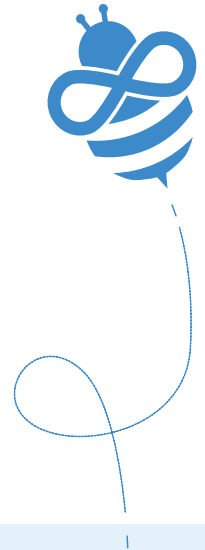
On-Premises Web Filter

Protect student digital activity everywhere on campus with an agentless, OS-agnostic, cloud managed web filter that is ideal for BYOD and non-BYOD environments.

Agentless Student Digital Safety

Students use a variety of devices for learning, and many aren't managed by the school. This creates gaps in protection, as students can bypass controls—leaving schools with limited visibility and slower responses to online risks. It also makes it harder to meet duty-of-care obligations and provide strong reporting for audits.

The On-Premises Web Filter, an extension of Assure Standard and Assure Lite, offers agentless, operating system-agnostic protection across all devices. It inspects encrypted traffic, enforces safe search and age-appropriate policies, and provides centralised reporting, ensuring student safety and clear evidence of duty of care.



What Are The Benefits?

- 1 Agentless Coverage**

Protects all devices on campus, including BYOD, guest, and IoT, without needing software installs.
- 2 Virtual Appliance**

No new hardware required. Quick to deploy, cost-effective, with automatic updates and centralised management.
- 3 Clarity for Wellbeing**

Unified reports make student activity easier to understand, enabling faster, evidence-based wellbeing support.
- 4 Low Device Impact**

No agents needed, helping preserve battery life and performance on student devices.
- 5 Reliable Policy Compliance**




Supports duty-of-care standards across all devices, helping schools meet audit and inspection requirements.
- 6 Streamlined Visibility**

Centralised controls reduce IT workload, support tickets, and time spent on troubleshooting.



On-Premises Web Filter Capabilities

Baseline Assure Web Filter Capabilities

-  **Selective SSL Decryption**
Improves safety and reduces incidents by inspecting encrypted traffic for harmful content.
-  **Centralised Reporting**
Provides fast, audit-ready insights through a single pane of glass for easier monitoring and intervention.
-  **Granular Controls**
Delivers age-appropriate access with flexible policies by year level, class, user, or time of day.
-  **Flexible Authentication**
Supports multiple identity providers, including SSO, for quick setup and fewer support issues.
-  **Safe Mode Enforcement**
Keeps students focused by enforcing Safe Mode on Search Engines and Video Streaming services.

Plus On-Premises Specific Capabilities

-  **Transparent Web Filtering**
Monitors all internet traffic at the gateway to enforce policies, prevent bypassing, and simplify reporting.
-  **OS Agnostic Protection**
Secures all devices including Chromebooks, Windows, macOS, iOS, Android, and IoT.
-  **Flexible Deployment**
Runs as a virtual appliance within existing infrastructure for quick setup and easy ongoing management.
-  **Scalable & Cost Effective**
Delivers performance and licensing that scale efficiently from single schools to multi-campus environments.
-  **Every Network Login Covered**
Automatically applies web filtering to all users on the school network—students, staff, guests, and BYOD.



Ready to get started?

Watch a Demo

<https://www.saasyan.com/watch-demo>

Request a Quote

<https://www.saasyan.com/request-quote>



saasyan