



ADD ON MODULE FOR  
STANDARD & LITE

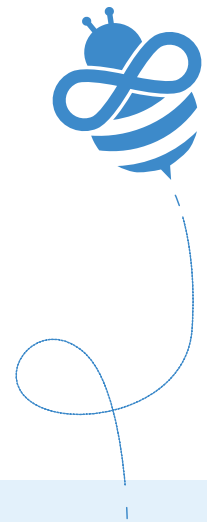
# Parent Portal

An easy to use Parent Portal that brings school policies into the home, ensuring consistent boundaries and better student wellbeing.

## Partnering with Parents

While schools set clear digital boundaries on campus, many parents lack the tools or time to maintain consistent controls at home. This can lead to gaps in safety, accountability, and student wellbeing after school hours.

The Parent Portal, available with Assure Standard or Assure Lite, extends school digital policies into the home. With a simple dashboard and customisable access rules, it provides consistent boundaries, privacy-respecting visibility, and shared responsibility between schools and families, reducing risk and encouraging healthier, more focused digital habits.



## What Are The Benefits?

### 1 Consistent Safety At Home & School

Schools extend online safety beyond campus. Parents apply matching boundaries at home, creating a unified experience that supports safer, more consistent digital habits for students.

### 2 Shared Visibility & Support

Schools promote open communication through transparent insights. Parents gain respectful visibility into after-hours activity, helping guide children while maintaining trust.

### 3 Trusted School-Home Partnership

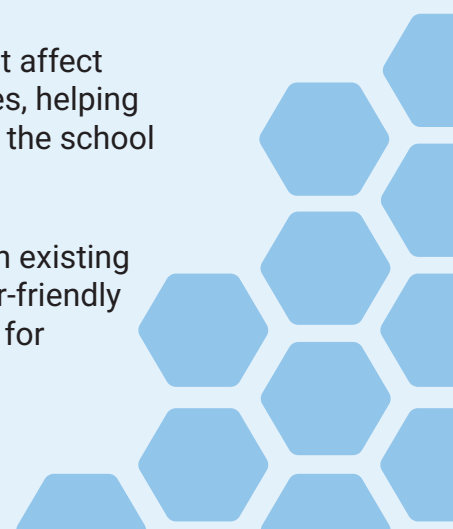
Schools demonstrate leadership in wellbeing with home aligned protection. Parents feel reassured by a clear partnership that builds trust and supports student safety across environments.

### 4 Focus & Wellbeing Continuity

Schools reduce late-night distractions that affect learning. Parents reinforce healthy routines, helping students stay focused and well-rested for the school day.

### 5 Simple Setup, Low Overhead

Schools benefit from easy integration with existing Assure deployments. Parents enjoy a user-friendly portal with quick setup and minimal need for technical support.



# Parent Portal Capabilities



## Simple Activity Dashboard

Provides parents with a clear view of their child's online activity at home, helping build trust and support informed guidance.



## Routine-Friendly Scheduling

Allows time-based limits for individual students, encouraging healthy habits without requiring constant parental supervision.



## No Tech Headaches

Offers a simple web-based setup with no complex installations, reducing IT support needs and making it easy for families to get started.



## Custom Access Controls

Enables parents to manage screen time by restricting access to games, social media, or video during homework or bedtime.



## Privacy Aware Design

Ensures data access is securely limited to authorised guardians and individual students, protecting family privacy.



## School Policy Alignment

Extends school-set digital boundaries into the home, while allowing families to tailor controls to suit their needs.



Ready to get started?

**Watch a Demo**

<https://www.saasyan.com/watch-demo>

**Request a Quote**

<https://www.saasyan.com/request-quote>



**saasyan**